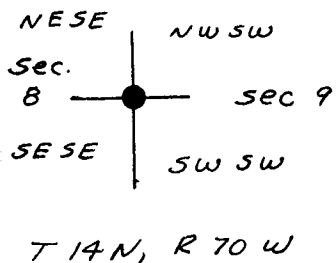


CERTIFIED LAND CORNER RECORDATION

DESCRIPTION OF CORNER EVIDENCE FOUND, AND ORIGINAL RECORD (If known)

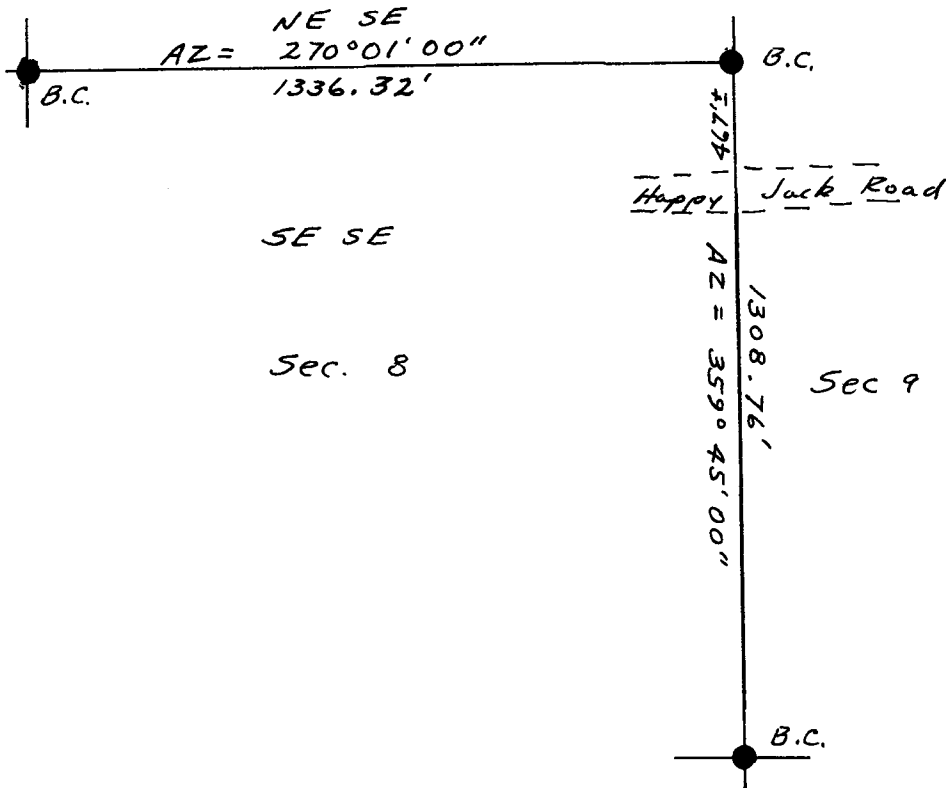


Brass Cap Set in Mound of stones and Marked

5 1/16
58 | 59
1934

DESCRIPTION OF MONUMENT AND ACCESSORIES ESTABLISHED TO PERPETUATE THE ORIGINAL LOCATION OF THIS CORNER:

SKETCH, WITH COURSE AND DISTANCE TO ADJACENT CORNER IF DETERMINED IN THIS SURVEY. (May Sketch or Paste Reproduction on Reverse Side.)



I, Edward C. Fry certify that I have carefully performed or reviewed the work done on the diagrammed corner as reported on this recordation form and approve the same.

Edward C. Fry Signature of Surveyor
662 Registration No.

STATE OF WYOMING,
Office of Clerk and Recorder,
County of Laramie

This "corner record" was filed for record on the 5 day of April, 1917, was noted on the cross-index plat and is assigned page No. 1, in book No. 14-70.

James C. Whitehead
County Official

Cross Index No. _____	T. _____	R. _____	Mer. _____
_____	T. _____	R. _____	Mer. _____
_____	T. _____	R. _____	Mer. _____
_____	T. _____	R. _____	Mer. _____
_____	T. _____	R. _____	Mer. _____
_____	T. _____	R. _____	Mer. _____
_____	T. _____	R. _____	Mer. _____
_____	T. _____	R. _____	Mer. _____